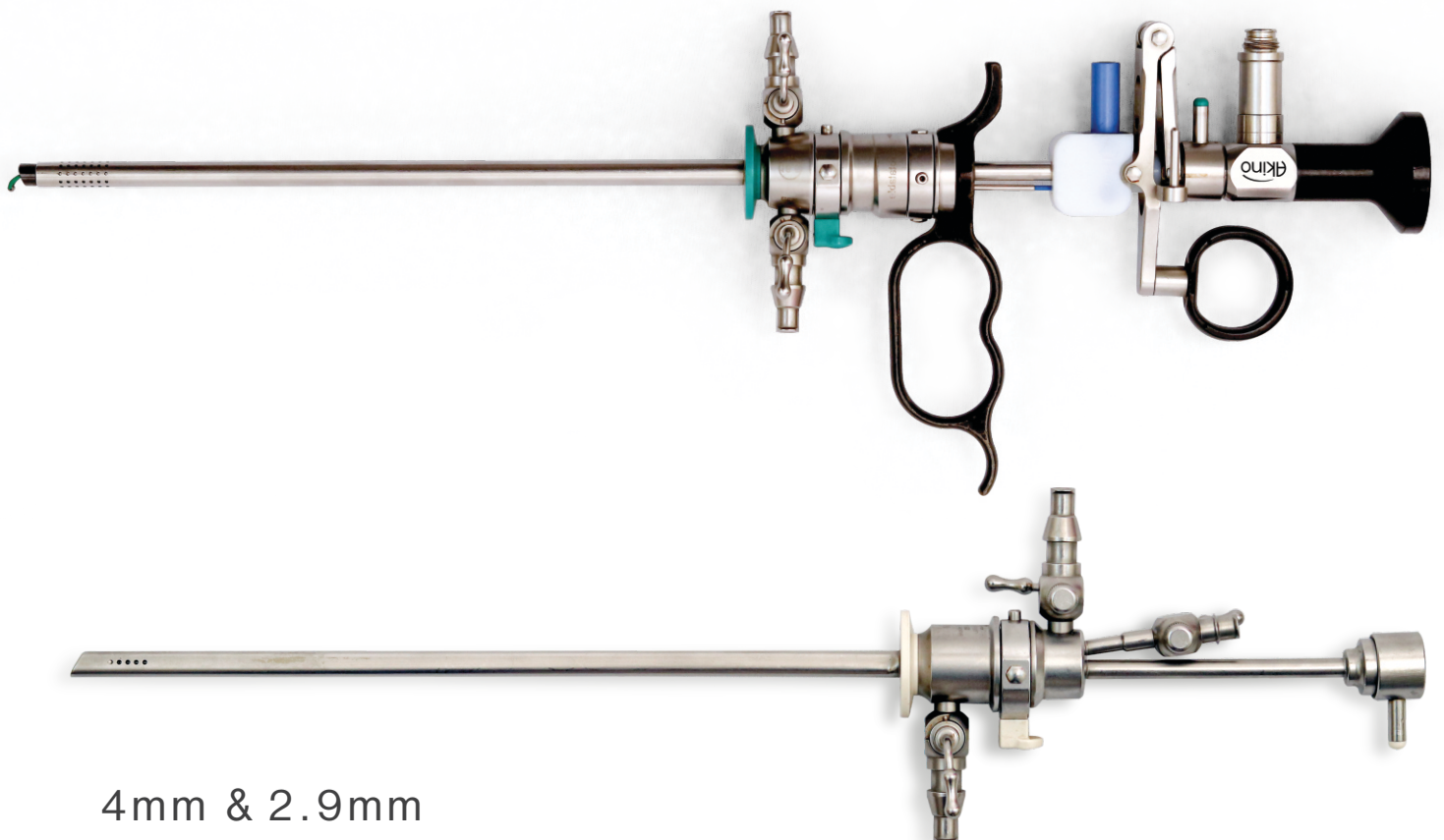


HYSTEROSCOPY

Akino
Surgery Simplified

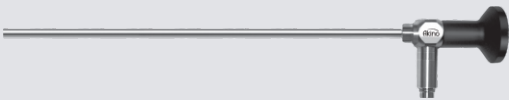


4mm & 2.9mm

4mm HYSTEROSCOPY

4mm Hysteroscope
0°/12°/30°, WL 300mm

Art No. 30° - 2040.3030H



- High Magnification HD optics
- Laser welded joints
- Sapphire tip for long life
- High transmission ratio for uniform brightness
- Medical grade stainless steel tube & body
- Glass cone for optimised illumination

Diagnostic Sheath For 4mm, 0°/30° Hysteroscope
Art No. DS 40.1000 / OB 40.1001



- Continuous flow for better vision
- Supplied with obturator
- Inner sheath 5.4mm, WL 260mm
- Outer Sheath 6.5mm, WL 240mm

Tear Drop Operative Sheath

Art No. OS 40.2002

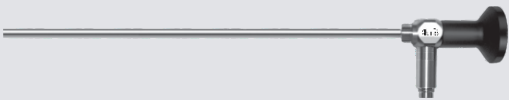


- Continuous flow for better vision
- Tear drop shape sheath- less dilatation
- Good irrigation even with instrument inside
- Size Ø6.5mm, 0° / 30°, WL 192mm
- Working Channel - 5 CH
- Quick lock mechanism

2.9mm HYSTEROSCOPY

2.9mm Hysteroscope
0°/12°/30°, WL 300mm

Art No. 30° - 2029.3030H

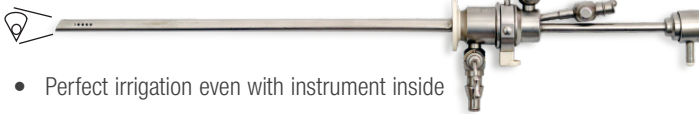


- High Magnification HD optics
- Laser welded joints
- Sapphire tip for long life
- High transmission ratio for uniform brightness
- Medical grade stainless steel tube & body
- Glass cone for optimised illumination

Diagnostic Sheath
Art No. DS 29.1100 / OB 29.1101



Operative Sheath - Tear Drop Sheath For Less Trauma
Art No. OS 29.2100



- Perfect irrigation even with instrument inside
- Outer sheath 5.0mm Tear drop shape, WL 192mm
- Working Channel 5 CH for inner sheath
- Continuous flow for better vision

Semi Rigid Forceps / Scissor



Biopsy

Art No. FF05.7001

Alligator

Art No. FF05.7002

Scissor

Art No. FF05.7003

- Semi Rigid
- Long Life, Sturdy
- Medical Grade SS
- 1.6mm, 5 CH
- WL - 40cm

BIPOLAR RESECTOSCOPE

Advantages of Bipolar Resectoscope

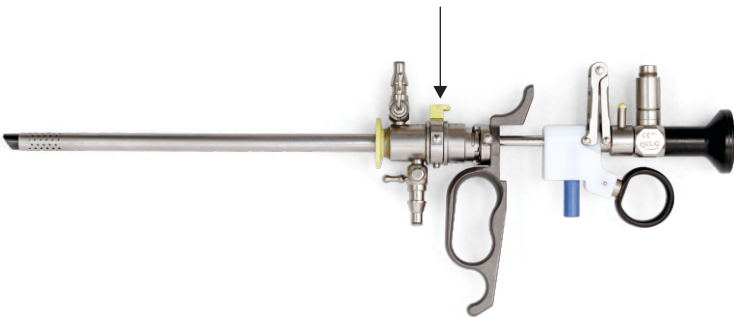
- Saline resection, no risk of glycine
- Specially designed Bipolar electrodes for better cutting & coagulation
- Less blood loss

NOTE - Monopolar Resectoscope also available.

Features

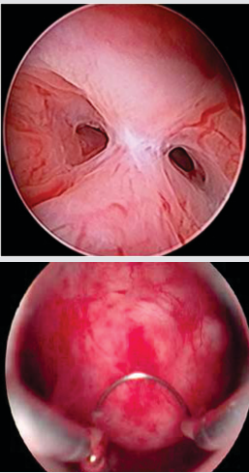
- Resectoscope sheath for Continuous irrigation - 24/26 CH
- Passive Working Element for Monopolar or Bipolar
- Specially designed bipolar cable - BC40.6007
- Bipolar & Monopolar electrodes with shapes - Roller, Knife, Loop
- Quick lock mechanism - No rotation of knob

Quick lock button

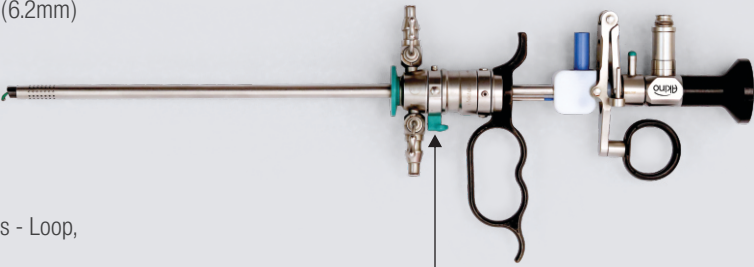


MINI BIPOLAR RESECTOSCOPE

- Bipolar enables saline resection, less trauma to cervix & reduced surgical time
- Smaller diameter 18.5 CH (6.2mm) for less dilatation
- Resectoscope sheath for Continuous irrigation
- Passive Working Element
- Long life Bipolar electrodes - Loop, Ball, Knife
- Specially designed Bipolar cable



Quick lock button



Resectoscope
Sheath With Obturator
Art No. BR 40.4004



Bipolar Working Element
(Passive)
Art No. BR 40.3003



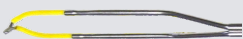
Bipolar
Electrodes



Roller

2.9mm Art No. BE 29.5102 /
4mm Art No. BE 40.5007

- Monopolar Electrodes Available on Request



Knife

2.9mm Art No. BE 29.5101 /
4mm Art No. BE 40.5006



Loop

2.9mm Art No. BE 29.5100 /
4mm Art No. BE 40.5005

Resectoscope
Sheath With Obturator
Art No. BR 29.4100



Bipolar Working Element
Art No. BR 29.3100





Akino Medical Pte Ltd

www.akinomedical.com

JAPAN:

Level 9 Ariake Frontier
Building,
Tower B 3-7-26 Ariake, Koto-
ku,
Tokyo 135-0063, Japan

SINGAPORE:

362, Upper Paya Lebar Road,
#04-09, Da Jin Factory
building,
Singapore - 534963
Tel.: + 65 68087810

AKINO NEAREST REPRESENTATIVE

